



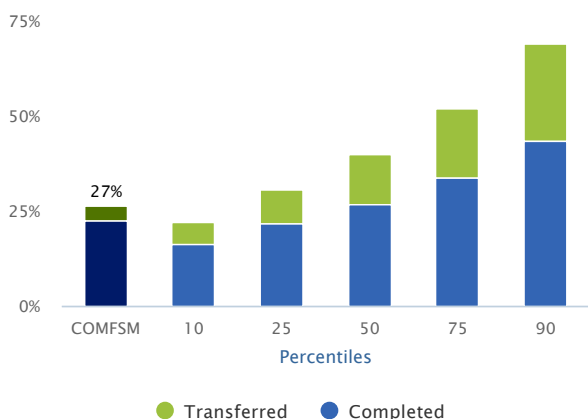
Executive Report for Dr. Joseph Daisy

COLLEGE OF MICRONESIA-FSM

Key National Benchmarks – Where Does Your Institution Stand?

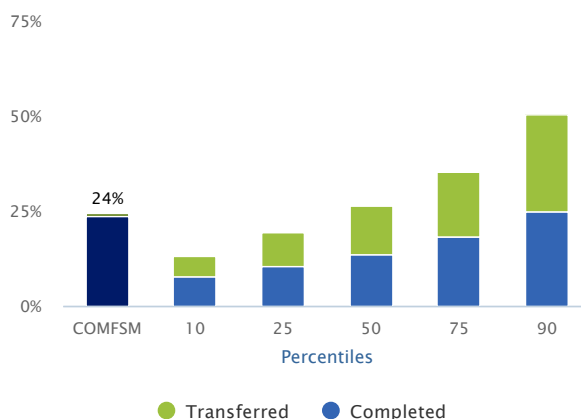
Thank you for participating in the National Community College Benchmark Project in 2019. The report illustrates how your college compared to national data, representing 218 community colleges. The full NCCBP report, available online, contains more than 150 benchmarks, including new student success measures.

Full-time Students Completed or Transferred in Three Years



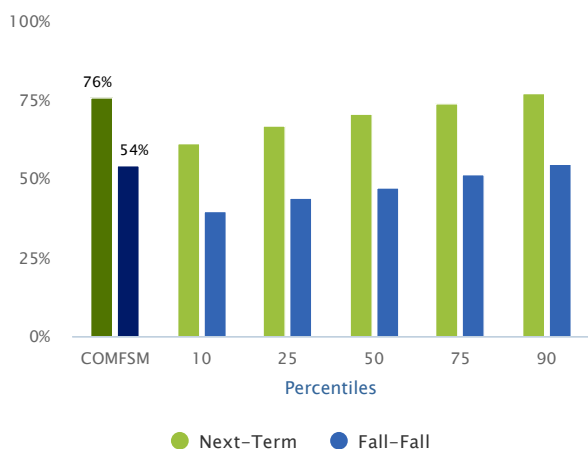
The percent of students out of the unduplicated full-time, first-time, credit headcount from Fall 2015 IPEDS GRS cohort who either completed a degree or certificate before fall 2018 or who transferred to four-year institutions before fall 2018.

Part-time Students Completed or Transferred in Six Years



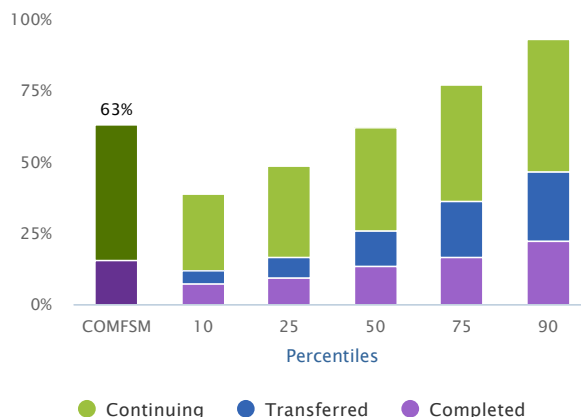
The percent of part-time students out of the unduplicated part-time, first-time, credit headcount from Fall 2013 IPEDS GRS cohort who either completed a degree or certificate before fall 2018 or who transferred to four-year institutions before fall 2018.

Persistence Rate



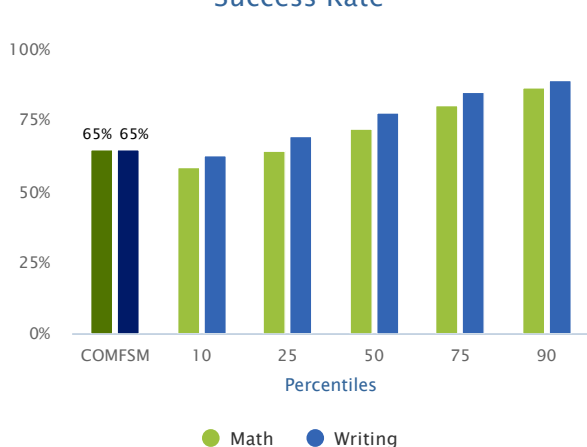
The persistence rate is the percent of Fall 2017 credit students, both full- and part-time, who return to the campus for the next term (usually Spring 2018), or for the next fall term (Fall 2018). This metric excludes students who graduated or completed certificates in the time frame.

Student Completions/Transfers/Continuing



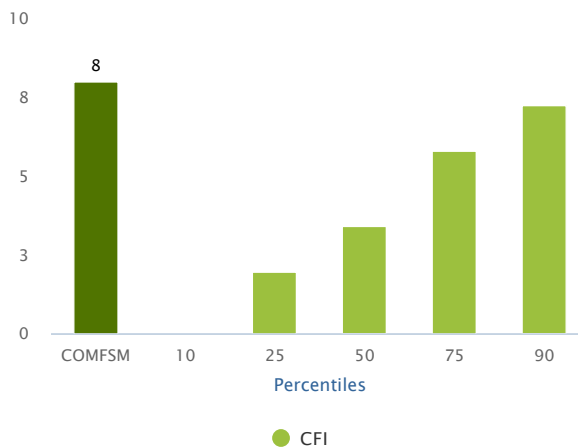
Percent of all students in an academic year who complete, transferred or continue at the college the following year.

Developmental Completer Success Rate



The percent of students, institution-wide, who received grades of A, B, C, or Pass in developmental/remedial math and writing courses in fall 2017.

Composite Financial Indicator



The Composite Financial Index is a weighed score of the primary reserve ratio, net income ratio, return on net assets ratio and the viability ratio. Source: Strategic Financial Analysis for Higher Education: Identifying, Measuring & Reporting Financial Risks (Seventh Edition), by KPMG LLP; Prager, Sealy & Co., LLC; Attain LLC.

Strengths

The following benchmarks are where your community college performed at its best. The benchmark is followed by the percent rank for your institution.

1. % of Students that Received a Passing Grade in their First College-Level Writing Course of those that Completed a Developmental/Remedial Writing Course
Your Rank - >99th Percentile
2. CCSSE Support for Learners Benchmark Mean
Your Rank - >99th Percentile
3. CCSSE Active & Collaborative Learning Benchmark Means
Your Rank - >99th Percentile
4. CCSSE Student Effort Benchmark Means
Your Rank - >99th Percentile

Opportunities for Improvement

The following benchmarks are where your community college may need improvement. The benchmark is followed by the percent rank for your institution.

1. % of Part-Time, First-Time Students that Transferred in Three Years
Your Rank - <1st Percentile
2. % of Part-Time, First-Time Students that Completed or Transferred in Three Years
Your Rank - <1st Percentile
3. % of Full-Time, First-Time Students that Transferred in Six Years
Your Rank - <1st Percentile
4. % of Students that Received a Passing Grade from those that Completed Credit Courses
Your Rank - <1st Percentile

More Information

Find more information on the NCCBP by visiting our website NCCBP.org or by calling or emailing the Benchmark Institute.

Johnson County Community College
12345 College Blvd.
Overland Park, KS 66210
913-469-8500 Ext. 4019
E-mail: michelletaylor@jcc.edu
Twitter: [@EdBenchmark](https://twitter.com/EdBenchmark)

